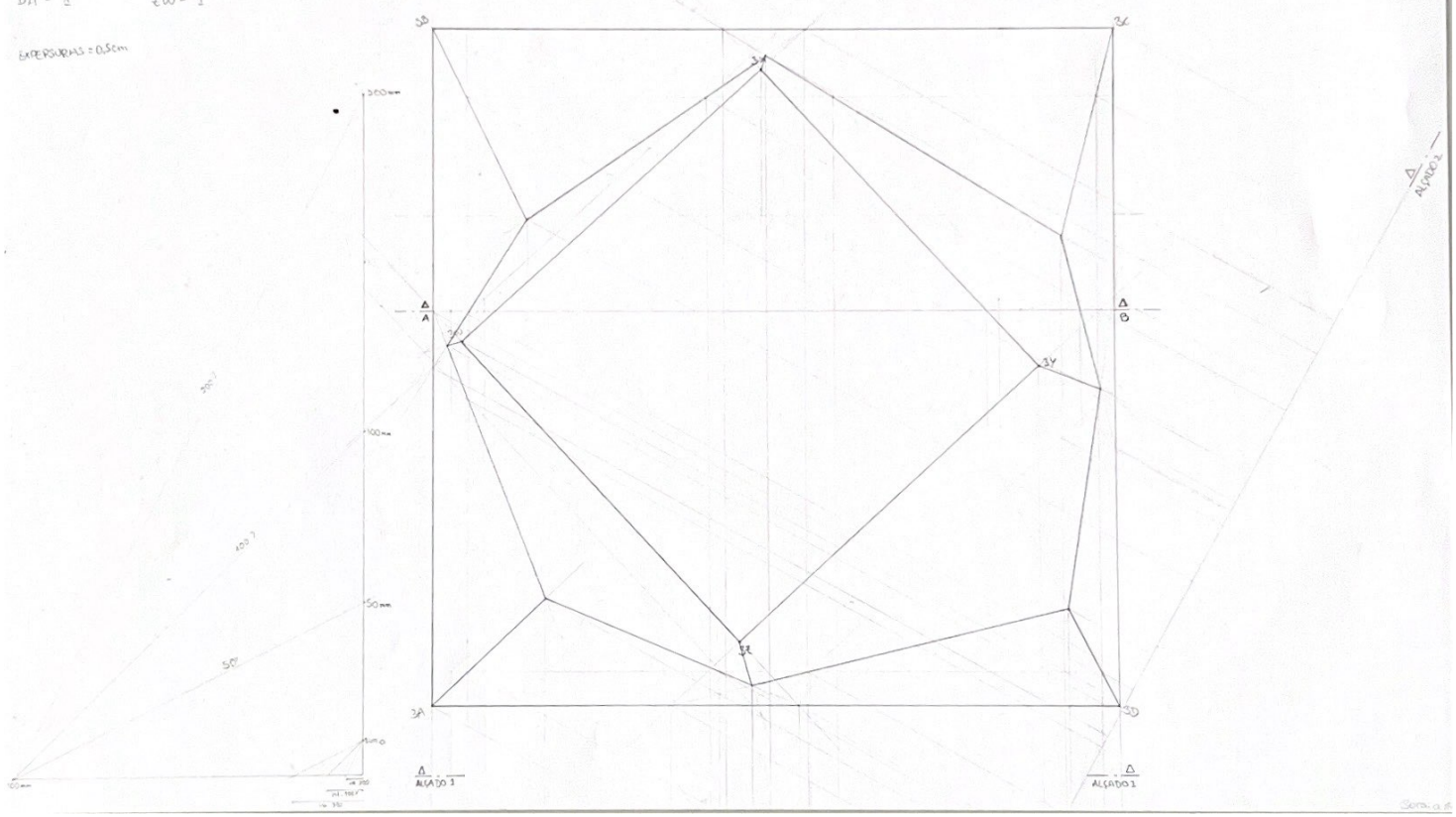


Jun a : 1m
Esc : 1/100

Os declives das águas são:
AB - 100% WX - 2
BC - 0,5 XY - 45°
CD - 200% YZ - 0,5
DA - 1 ZW - 1

EXTERIORS = 0,5cm



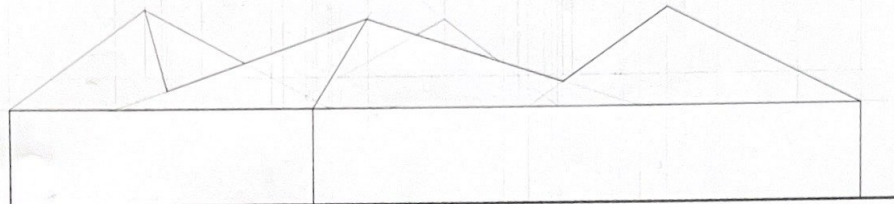
1/1000

Carta 12

ALCADO 1



ALCADO 2



CORTE A-B

